



FIRE: Flat Lake (C41602)

FIRE SIZE: 39,584 ha (mapped)

FIRE STATUS: Out of Control

RESOURCES: There are currently 76 firefighters, 39 pieces of equipment, 6 structural protection personnel and there are 19 helicopters for the Northeast complex.

UPDATES:

- An up-to-date perimeter map can be found on the BC Wildfires Dashboard at bcwildfire.ca
- **On the West side:** Heavy equipment has completed a guard system on this west side of the fire along the Gustafsen Nielson road. Crews will continue to be working today (July 29th) to secure this side of the fire.
- **On the East side:** Crews also continued to make progress on securing control lines on the east side. Today (July 29th), crews continue to target hot spots found by an aerial scan that locates heat signatures as well as areas of increased activity from yesterday.
- **On the South side:** Increased fire behaviour yesterday (July 28th), caused some growth of the fire perimeter in the southwest corner. This morning personnel will be on-site assessing and planning for machine guard options. Heavy equipment will be working today to contain this area. The perimeter of the fire near Toby Lake and McKinley Lake also saw increased fire behaviour yesterday but the fire remained within the proposed containment. Crews will also be working to extinguish along the perimeter in the southeast today. A machine guard is under construction and planning is underway for ignition opportunities that will secure the south side of the fire.
- **On the North side:** A machine guard in the north is complete and planning for potential ignition operations in a portion of the northwest corner is underway. This planned ignition may take place today (July 29th), if conditions permit. The north side of the fire was active yesterday (July 28th) but saw minimal growth.
- **Other:** Structural protection specialists continue to support the residences and properties on the west side of Hwy 97 and will be assessing residences in the area south of the fire in the vicinity of Meadow Lake. The fire continues to be monitored by crews overnight.

EVACUATION ALERTS AND ORDERS: An expansion of the Evacuation Alert for Electoral Area “E” (Bonaparte Plateau) was issued by the Thompson-Nicola Regional District yesterday evening (July 28). Visit tnrd.ca for more information and a [map](#). The existing Evacuation Order and Alerts issued by the Thompson-Nicola Regional District remain in place. The Evacuation Alert in the vicinity of Flat Lake to Green Lake North by the Cariboo Regional District remains in place. All other Evacuation Order and Alerts issued by the Cariboo Regional District remain in place. The District of 100 Mile House Evacuation Alert remains in place.

ADDITIONAL CONTACT INFORMATION:

100 Mile Northeast Complex Fire Information Team:

250 268-1857 or BCWS.NorthEastInfo@gov.bc.ca



www.bcwildfire.ca



BC Forest Fire Info



@BCGovFireInfo



www.firesmartbc.ca



FIRE: South of Canim Lake Wildfire (C41100)

FIRE SIZE: 2,673 hectares (mapped)

FIRE STATUS: Out of Control

RESOURCES:

There are currently 17 firefighters, 5 pieces of heavy equipment and there are 19 helicopters available to continue to action the fires within the Northeast complex with bucketing activities.

UPDATES:

- The north and west side of the fire is contained and continues to be monitored. Crews are continuing to patrol these areas.
- On the south side of the fire heavy equipment has established a contingency guard and crews continue to work directly on the fire perimeter with hose systems and water. Yesterday (July 29) the south side of the fire saw increased fire behaviour within control lines. Today, work will continue in this area as well as planning for further direct attack options.
- On the east side of the fire, work continues with crews mopping up south of MacNeil Lake. Further south, near Drewry lake crews have established a fuel free guard.
- Structure protection is no longer required and has been removed from all residences associated with this fire.

EVACUATION ALERTS AND ORDERS:

The north and south side of Canim Lake remain on Evacuation Alert issued by the Cariboo Regional District.

Evacuation information is also available on our map [here](#) or at <http://ow.ly/uo2U30oXqzS>

ADDITIONAL CONTACT INFORMATION:

100 Mile Northeast Complex Fire Information Team:

250 268-1857 or BCWS.NorthEastInfo@gov.bc.ca





OTHER ACTIVE FIRES IN THE 100 MILE NORTHEAST COMPLEX

Fire Number	General Location	Status
C41088	1Km NW of Irish Lake	Being Held
C41102	SW of Deka Lake	Being Held
C41114	1.3km NE of Wilcox Lake	Under Control
C41125	E of Ryall Rd	Under Control
C41143	Dombey Lake E	Under Control
C41144	Dombey Lake S	Under Control
C41145	Duckling Lake S	Under Control
C41146	Howard Lake	Being Held
C41147	SE end of Lang Lake	Out of Control
C41149	End of Horse Lake Rd North	Under Control
C41155	Deka Lake	Under Control
C41191	W of Succour Lake	Out of Control
C41312	E of Fiset Lake	Under Control
C41515	2.3 km N of Deka Lake	Being Held
C41972	Schoolhouse Lake Park	Under Control

**For Information on all other fires within
the Cariboo Fire Centre Contact :**

BCWS.CAFCInformationOfficer@gov.bc.ca
or
778-799-2100

WEATHER

Thursday: Sunny. Winds northwesterly 10-15 km/h, with occasional gusts to 25 km/h and shifting to northerly in the afternoon. Maximum temperature will be 29°C and the minimum Relative Humidity (RH) will be 20%.

Friday/Saturday/Sunday: The ridge will remain, bringing sunshine and hot and dry conditions and generally light winds, with wind direction being highly influence by the thermal trough positioning. Smoke continues as an issue, with temperatures pushing into the low 30's, and RH continuing into the 20's or more likely teens. We start to see the potential for a sub-tropical feed into the region late Saturday, which could bring a push of initially dry lightning then possible spotty showers into Sunday.

Spot a wildfire, smoke or illegal fire activity? Call 1 800 663-5555 or *5555 on your cellphone.






HELPFUL RESOURCES:

- View an interactive map by clicking [here](http://ow.ly/uo2U30oXqzS) or visiting <http://ow.ly/uo2U30oXqzS>
- **Road Closures:** DriveBC | dial 1-800-550-4997 | <https://www.drivebc.ca/>
- **Drifting Smoke:** www.bcairquality.ca/bluesky/west/index.html
- **Smoke Health Concerns:** HealthLink BC | dial 8-1-1 | www.healthlinkbc.ca/kbaltindex.asp
- For info on **Community Support Services**, click [here](https://www.emergencyinfobc.gov.bc.ca/) or visit <https://www.emergencyinfobc.gov.bc.ca/>
- For **damage** to private property and Reserve Lands, please email BCWSClaims2019@gov.bc.ca.

ROLES AND RESPONSIBILITIES

BC Wildfire Service	Emergency Management BC	Local municipalities and regional districts	First Nations
<ul style="list-style-type: none"> - BCWS's jurisdiction covers all BC Parks, Crown and private lands, but does not include the boundaries of local governments that have forest fire prevention bylaws and are serviced by a fire department. - BCWS speaks directly about wildfires (i.e. fire status, operations, etc.) and is responsible for disseminating wildfire updates to local governments, stakeholders, First Nations and the public. - BCWS does <u>not</u> announce Strategic Evacuation Orders or Alerts. - BCWS <u>does</u> announce Tactical Evacuations. - In the event of an imminent threat to public safety, BCWS can authorize an immediate Tactical Evacuation of the affected area. 	<ul style="list-style-type: none"> - EMBC coordinates communication across all agencies and stakeholders to support communities. - EMBC provides advice to evacuees and support to communities regarding Emergency Operations Centres and Emergency Support Services. 	<ul style="list-style-type: none"> - Local Municipalities and Regional Districts speak directly about Strategic Evacuation Orders and Alerts in their respective jurisdictions. - Local Municipalities and Regional Districts <u>do not</u> speak about the status of a wildfire unless the fire occurs within their jurisdiction. For example, if a wildfire <u>starts</u> within the boundaries of a local government, BCWS will often assist the local fire department with suppression efforts. If the fire spreads into Crown land to become a wildfire, BCWS will often assume control. 	<ul style="list-style-type: none"> - On IR lands, Evacuation Orders and Alerts are implemented by a Band Council Resolution or other. - A designated person(s) from the respective First Nations community will speak to Evacuation Orders and Alerts on IR lands.

ACCESSING INFORMATION

BC Wildfire Service Online Communications	EmergencyInfoBC EMBC Online Communications	PreparednessBC EMBC Online Communications
 @BCGovFireInfo	@EmergencyInfoBC	@PreparedBC
 www.bcwildfire.ca	 www.emergencyinfobc.gov.bc.ca	 www.gov.bc.ca/preparedBC
 BC Wildfire Service		PreparedBC



Check Out These Great FireSmart™ Resources



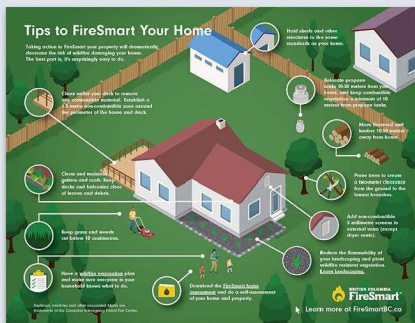
Homeowner's Manual

firesmartbc.ca/resource/firesmart-begins-at-home-manual



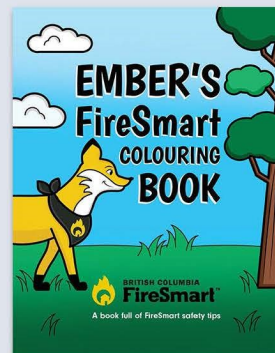
Landscaping Guide

firesmartbc.ca/resource-types/guides-manuals/



Top Tips Poster

firesmartbc.ca/resource-types/posters-and-graphics



Ember's Colouring Book

firesmartbc.ca/resource/embers-colouring-book